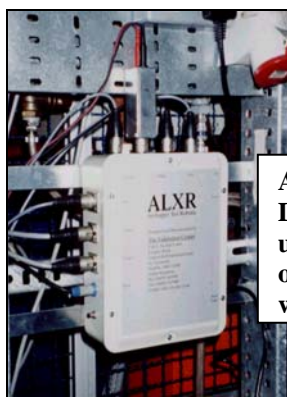
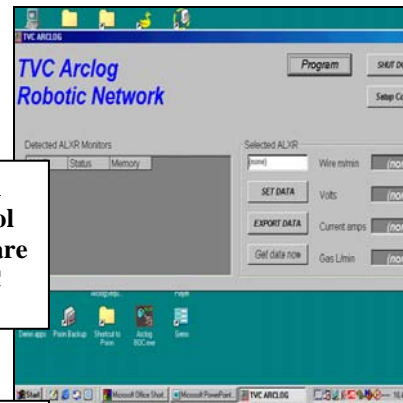


ARC LOGGER TEN ROBOTIC

The TVC Arc Logger Ten Robotic(ALXR) is a purpose built arc monitor and data logging system, designed for fixed installation in the semi automatic or robotic welding environment. The system is capable of monitoring multiple units through an RS485 data link to a central PC. Units can be up to 1.2 kilometres away from the control PC and are “daisy chained” via a single cable. The system is capable of monitoring all types of arc welding processes, and producing custom reports for use by the production and QA departments.



ALXR Data-logging unit mounted on robot welding cell



ALXR Control Software for PC

ALXR MS-Excel Weld Parameter Spreadsheet Report

Weld No.		Res No.	Weld Time	Welder	Weld Process	Consumables Elec/Wire Diam (mm)	Pol.	Gas Type	Flow Rate (L/Min)	Interpass Temp (°C)	Volts	Amps	Weld Length (mm)	Time (sec)	Welding Speed (mm/min)	Feed Speed (mm/min)	Heat Input (kJ/mm)
12	1	1	15:00	MITTON	MIG	5.0mm		Argon	8.0	150	100	100	1.2	15	100	100	100
13	2	2	15:05	MIG	MIG	5.0mm		Argon	8.0	150	100	100	1.2	15	100	100	100
14	3	3	15:10	MIG	MIG	5.0mm		Argon	8.0	150	100	100	1.2	15	100	100	100
15	4	4	15:15	MIG	MIG	5.0mm		Argon	8.0	150	100	100	1.2	15	100	100	100
16	5	5	15:20	MIG	MIG	5.0mm		Argon	8.0	150	100	100	1.2	15	100	100	100
17	6	6	15:25	MIG	MIG	5.0mm		Argon	8.0	150	100	100	1.2	15	100	100	100
18	7	7	15:30	MIG	MIG	5.0mm		Argon	8.0	150	100	100	1.2	15	100	100	100
19	8	8	15:35	MIG	MIG	5.0mm		Argon	8.0	150	100	100	1.2	15	100	100	100



FEATURES INCLUDE:

- ❖ Alarm at the work station and control point.
- ❖ Continuous monitoring 24 hrs a day.
- ❖ Fixed installation of multiple units.
- ❖ Monitoring of the entire plant via a single PC.
- ❖ Custom spreadsheet design to suit all requirements.
- ❖ Certified and traceable calibration.

The Validation Centre (TVC) Limited
Unit 9 Sinclair Court, Faraday Road, Gapton Hall Industrial Estate,
Gt.Yarmouth, Norfolk, NR31 0NH UK
Tel: ++44(0)1493 443800 Fax:++44(0)1493 443900
Website: www.tvcalx.co.uk Email:sales@tvcalx.co.uk

ALXR

TECHNICAL SPECIFICATION

APPLICATIONS:	Mig/Tig (AC & DC)/Fluxcore
DIMENSIONS (mm):	257 x 205 x 95
WEIGHT:	2.7 Kg
TEMPERATURE RANGE:	0 – 40 Degrees C
TECHNIQUES:	Semi/Fully Automatic & Robotic
FAULT RELAYS:	5 Clean Contacts, Programmable
POWER SUPPLY:	220V AC lamp
COMMUNICATION:	RS 485

MONITORED PARAMETERS

AVERAGE CURRENT:	15 – 400 amps +/- 2% max.
AVERAGE VOLTAGE:	0 – 99.9 volts +/- 1% max.
ARC ENERGY:	1 – 9999kJ +/- 2% max.
ARC TIME:	0.3 – 9999 SECS +/- 0.1%.
HEAT INPUT:	1 – 9999 J/mm +/- 2% max.
WIRE SPEED:	0 – 20 m/MIN +/- 2.5% max.
GAS FLOW:	0 – 120 Lt/min +/- 5.0% max.

SPECIFICATIONS SUBJECT TO CHANGE WITHOUT NOTICE

The Validation Centre (TVC) Limited
Unit 9 Sinclair Court, Faraday Road, Gapton Hall Industrial Estate,
Great Yarmouth, Norfolk, NR31 0NH, UK
Tel:++44(0)1493 443800 Fax:++44(0)1493 443900
Website:www.tvcalx.co.uk Email:sales@tvcalx.co.uk