

# WFM2



## WIRE FEED METER

- Predictable welding current for a specific wire size and feed speed
- Easy-to-use and mount
- Real-time data
- Data logging available
- Wire type and diameter selection
- Choice of 3-wheel or 2-wheel tachometer

## Accurate electrode feed rates, every time.

The WFM2 is a portable, battery-powered monitor that allows you to set and record consumable electrode feed rates for automated welding processes. This ensures a predictable welding current for a specific wire size and feed speed, whether you choose the Standard or Advanced model.

The tachometer transducer is designed to be self-supporting on the monitored wire, thanks to its purpose-designed mounting cradle. Its compact design allows for easy mounting between the consumable spool and pinch rollers in most wire feed systems. This makes it ideal for in-process quality control monitoring and validation of wire feed rates.

The wire speed tachometer comes with grooved-idler wheels that ensure all wire diameters are held by the tachometer. The wheels are easily changed by the operator, making it a versatile and user-friendly device.

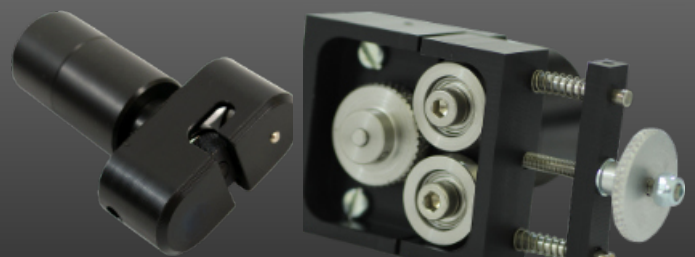
The main screen of the device displays real-time data on wire speed, pay-off in meters, and deposition rate in kilograms. An internal clock counts the feeding time (welding time) in seconds while wire is feeding. An additional clock counts and displays the operational time.

The operator can select the wire type and diameter,

and the unit will then calculate and display the wire deposition in kilograms.

The Advanced model of the WFM2 offers users the ability to select metric or imperial units, as well as record data onto the internal memory. This data can then be transferred to a PC for integration into MS Excel spreadsheet reports.

The WFM2 is available with a choice of two wire feed tachometers: a 3-wheel and a 2-wheel tachometer. The 3-wheel tachometer is more versatile and can be used with a wider range of wire sizes, while the 2-wheel tachometer is more compact and lightweight.



**WHEN ACCURACY MATTERS**  
Design, Manufacture, Calibration & Supply

[tvcalx.co.uk](http://tvcalx.co.uk)

## General Specifications

Wire Diameter Range	0.8 - 4.0mm
Screen	35 x 30mm Colour LED
Operating Temperature	0 - 50°C
Transducer Size	150 x 50 x 25mm
Cable Length	Approx. 4M
Dimensions	85 x 140 x 50mm
Battery Type	Li-Ion 7.4V 2.6Ah Rechargeable
Battery Charger	External 90-240V AC, Auto Selection

## Monitored Parameters

Speed Range	0.1 - 30.0m/min
Display Resolution	0.1m/min
Wire Pay Off	0.1 - 999.9m
Deposition Rate	0.1 - 999.9Kg
Welding Time	0.2 - 999.9secs
Accuracy	+/- 2%

Full calibration certification provided, traceable to The National Physical Laboratory (NPL), UK.  
UKAS 17025 calibration available on request.

The Validation Centre (TVC) Limited reserves the right to alter or change product specifications without prior notice. Images are representative of full optional additions installed; delivered equipment and software may vary depending on options purchased.



**THE VALIDATION CENTRE (TVC) LIMITED**

Unit 15, Brinell Way, Great Yarmouth, Norfolk,  
NR31 0LU, United Kingdom

